

**Arthur J. Arseneau  
Architect Ltd.**

Building  
HUNTON HOUSE

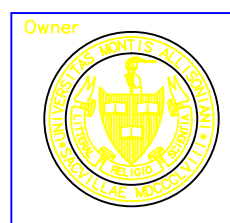
Sheet title  
BASEMENT PLAN

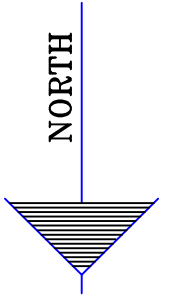
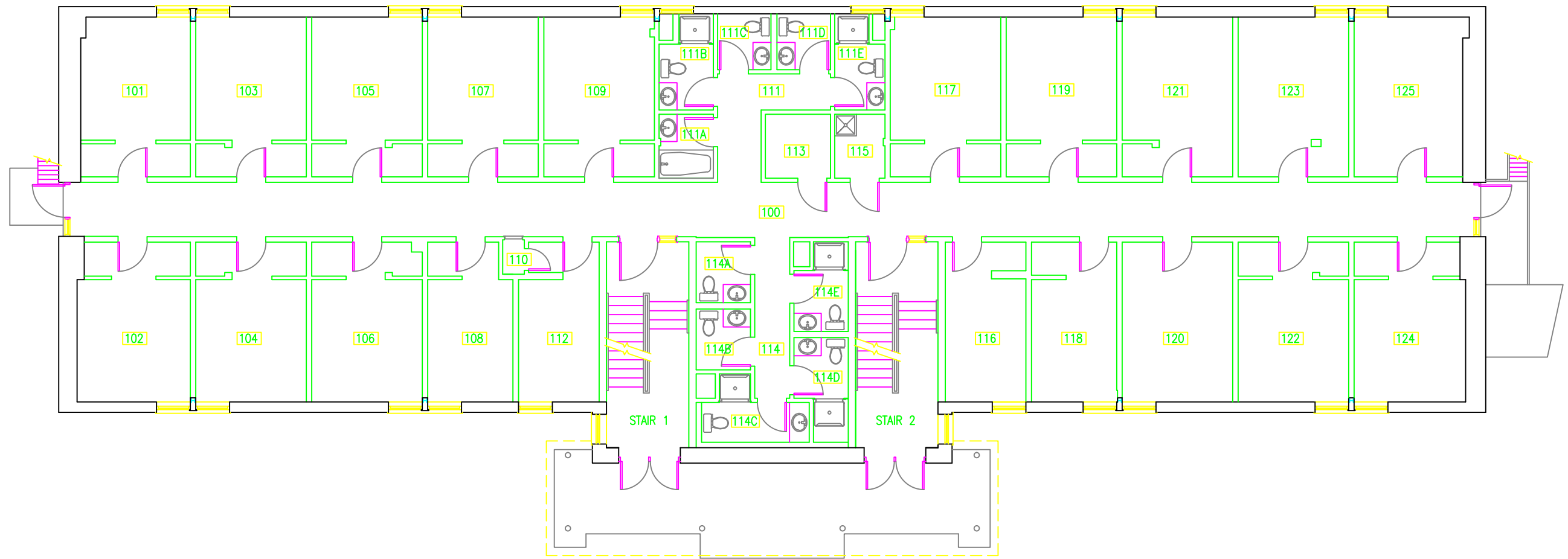
Date  
APRIL 2010

Scale  
3/32"=1'-0"

Drawn by  
R.M.S

Sheet no.  
A-1





**Arthur J. Arseneau  
Architect Ltd.**

Building  
HUNTON HOUSE

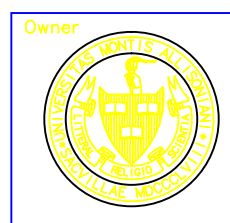
Sheet title  
FIRST FLOOR PLAN

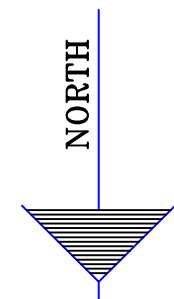
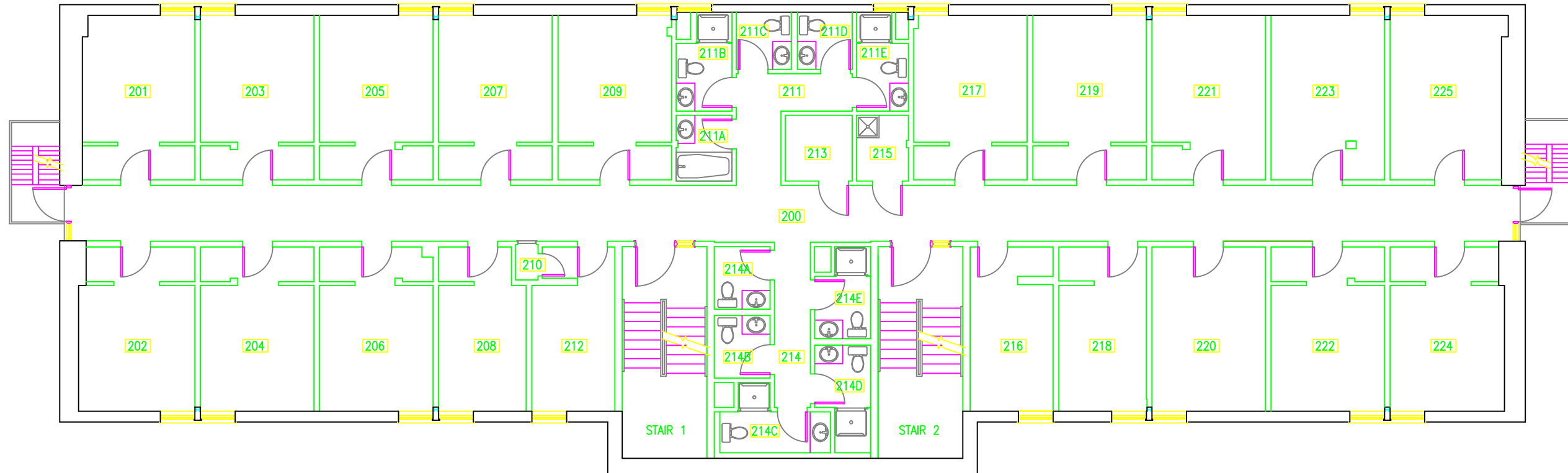
Date  
APRIL 2010

Scale  
3/32"=1'-0"

Drawn by  
R.M.S

Sheet no.  
A-2





**Arthur J. Arseneau  
Architect Ltd.**

Building  
HUNTON HOUSE

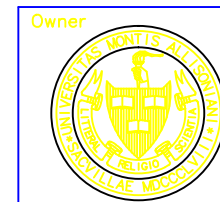
Sheet title  
SECOND FLOOR PLAN

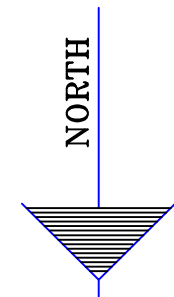
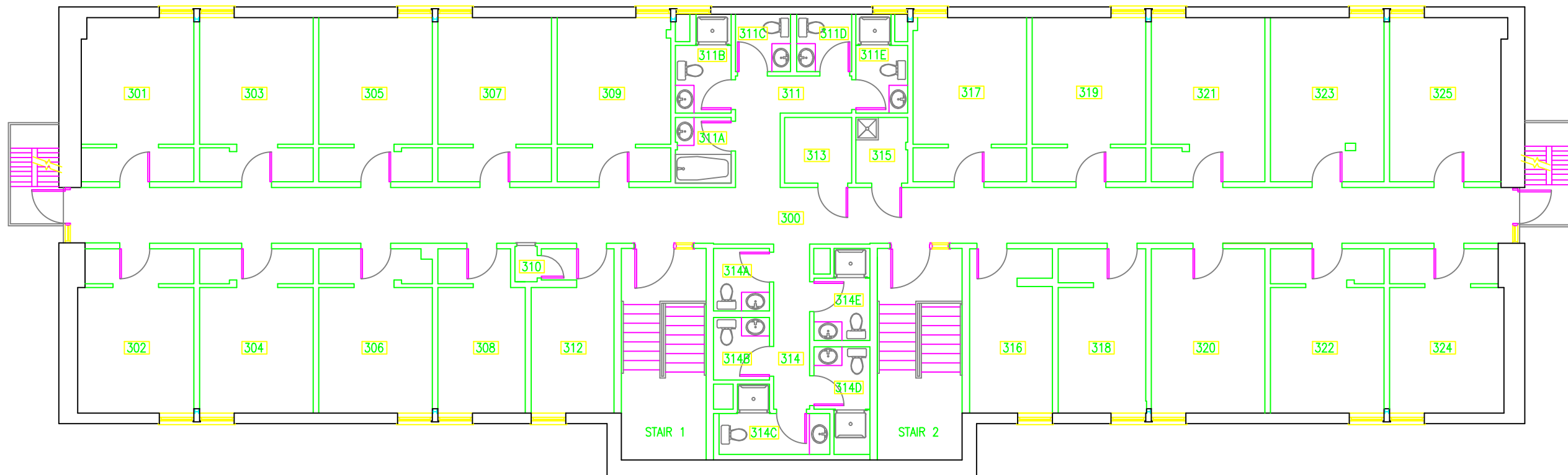
Date  
APRIL 2010

Scale  
3/32"=1'-0"

Drawn by  
R.M.S

Sheet no.  
A-3





**Arthur J. Arseneau  
Architect Ltd.**

Building  
HUNTON HOUSE

Sheet title  
THIRD FLOOR PLAN

Date  
APRIL 2010

Scale  
3/32"=1'-0"

Drawn by  
R.M.S

Sheet no.  
A-4

